

Model Number: **STORM 3 PT 8-12**

Serial Number: _____

THE STORM

3-PT 8-12

DITCHER



HURRICANE DITCHER CO., INC.

2425 Cathlinette Rd.
Vincennes, IN 47591

812-886-9663 Fax 812-886-0530

www.hurricane-ditcher.com

e-mail: info@hurricane-ditcher.com



UPDATED: March 2021

TABLE OF CONTENTS

| | |
|---|-----|
| INTRODUCTION | 3 |
| SPECIFICATIONS OF THE STORM 3-PT 8-12 | 3 |
| SAFETY PRECAUTIONS | 4 |
| WARNING LABELS & ILLUSTRATION | 5 |
| TRANSPORTATION | 6 |
| UNHITCHING FROM TRACTOR | 6 |
| USING THE STORM 3-PT 8-12 | 6 |
| CHECKLIST BEFORE OPERATION | 6-7 |
| OPERATING INSTRUCTIONS | 7-8 |
| MAINTENANCE | 8 |
| LUBRICATION | 8 |
| FREE MOVEMENT OF DRIVELINE | 9 |
| IDLER ADJUSTMENT | 9 |
| LIMITED WARRANTY | 10 |
| PTO SHAFT ASSEMBLY | 11 |
| PARTS LIST & ILLUSTRATION | 12 |
| MAINTENANCE LOG | 13 |
| DEALER NOTES | 14 |
| DEALER INFORMATION | 15 |



CAUTION!!!!

- Read the Operator's Manual.
- Learn to operate this machine SAFELY.
- Be alert. Observe ALL Safety Practices.
- Machines can be hazardous in the hands of an UNFAMILIAR, UNTRAINED or COMPLACENT operator.
- Do not risk INJURY or DEATH!

INTRODUCTION

Thank you and congratulations on the purchase of your Hurricane Ditcher Storm 3-PT 8-12. We certainly hope that it will be helpful and useful to you. As with all of our ditchers, it has been tested and built with knowledge, precision, and quality for years of dependable service. As a leader in the ditching industry since 1984, we continually build on our experience and use customer feedback to maintain and improve the quality and dependability of our machines.

In order to fulfill a need in agriculture, the 3-PT 8-12 was developed in 2014 as an efficient and affordable machine used to make surface drainage and irrigation ditches using a standard compact tractor.

Please read and follow all safety precautions, operating procedures and maintenance requirements. Following these recommendations will prevent injury and operation down time. Proper maintenance and lubrication will prevent machine breakdown and increase its life expectancy, which will lead to better performance for you.

Please let us know of any comments, suggestions, or problems that may arise.

HURRICANE DITCHER CO., INC.
2425 Cathlinette Road
Vincennes, IN 47591
812-886-9663
www.hurricane-ditcher.com
info@hurricane-ditcher.com

YOUR AUTHORIZED HURRICANE DITCHER DEALER:



SPECIFICATIONS OF THE STORM 3-PT 8-12

- HP required: 30 to 100 HP on 540 or 1000 RPM PTO.
- Width of cut: 8 inches with 6 paddle impeller wheel; 12 inches with 8 paddle impeller wheel.
- Depth of cut: up to 5 inches in a single pass; up to 12 inches in multiple passes with 6 paddle impeller wheel; up to 16 inches in multiple passes with 8 paddle impeller wheel.
- Weight of machine: approximately 400 pounds without optional components.
- Drive train: 55 series PTO with shear bolts which overload at the tractor end; double 60 roller chain with idler adjustment.
- Certain brands of tractors could require different length PTO. Contact your dealer for detailed specifications.

SAFETY PRECAUTIONS



OBSERVE THIS SYMBOL THROUGHOUT THIS MANUAL. It calls out potential hazards and dangers. This symbol will be associated with a key SIGNAL WORD that will designate a degree or level of hazard seriousness. These signal words are as follows:



DANGER! Indicates an imminently hazardous situation that, if not avoided, **WILL** result in death or serious injury; a danger that safety guards cannot protect against.



WARNING! Indicates a potentially hazardous situation that, if not avoided, **COULD** result in death or serious injury, and includes hazards that are exposed when guards are removed; also an alert to unsafe practices.



CAUTION! Indicates a potentially hazardous situation that, if not avoided, **MAY** result in minor or moderate injury; also an alert to unsafe practices.

INTENDED USE: 3-PT 8-12 STORM is designed to be pulled by a ROPS- equipped tractor of proper size. It is not to be used in any other purpose other than its intended use.

BEFORE OPERATION:

- Carefully study and understand this manual. Be sure the operator has read and understands all operations before using this machine.
- Do not wear loose-fitting clothing which may catch in moving parts.
- Learn to operate this machine safely. Be alert and observe all safety practices. Machines can be hazardous in the hands of an unfamiliar, untrained or complacent operator. Never risk injury or death!
- After servicing, be sure all tools and servicing equipment have been removed from the machine.
- Be certain there is no one near the machine before starting.
- Do not use the ditcher until you are **certain** that the area in which you are preparing to work is clear. Be especially watchful for people, animals and moving vehicles that may enter the discharge path. Remember, soil may be thrown over 50 feet, rocks and other debris may go farther, so use extreme caution in any area with buildings or objects that could be damaged from flying debris.



WARNING! Do not operate this machine above 1000 RPM. Excessive speed of PTO can be dangerous and could cause personal injury or damage to your tractor or ditcher.



WARNING! Do not exceed recommended horsepower (100 HP or less) for this machine. Excessive horsepower can be dangerous.



CAUTION! Make sure drawbar is moved to one side. Do not leave drawbar in middle of your tractor as PTO damage may occur!

- Before each use, inspect the lower shaft behind the impeller wheel for material wrapped around shaft. Failure to keep shaft clear could result in bearing failure and is not covered under warranty.

DURING OPERATION:

- Keep all shields in place.
- Allow no one to stand on the left side (discharge side) of the machine while it is in operation, whether it is moving or standing still.
- **NO PASSENGERS ALLOWED!** Do not allow anyone to ride on ditcher at any time.
- Keep clear of all moving parts.

- Disengage the PTO and shut off tractor engine before servicing, cleaning or clearing a clogged machine.



WARNING! Avoid overhead wires; contact could cause serious injury or death.

WARNING LABELS & ILLUSTRATION

Your 3-PT 8-12 STORM comes equipped with all safety labels in place. These safety labels are designed to help you safely operate your equipment. They inform you about possible hazards associated with the normal operation or foreseeable misuse of the product and how to properly avoid those hazards to prevent physical injury or death. You are required to read and follow their directions.

1. Keep all safety labels clean and legible.
2. Replace all damaged or missing labels.
3. New equipment installed during repairs may require replacement safety labels to be affixed or replaced part, if missing, as specified by Hurricane Ditcher Co.
4. Contact your local dealer to order replacement labels.
5. Refer to this section for proper label placement. When installing new labels:
 - a. Clean placement surface with soapy water or surface cleaning solution and allow to dry.
 - b. Peel backing from label, carefully center and place label in proper location ensuring no creases or air pockets
 - c. Press label firmly onto the surface and use a straight edge to smooth the label on the machine for a secure adhesion

| <u>ITEM</u> | <u>PART #</u> | <u>DESCRIPTION</u> |
|--------------------|----------------------|--|
| A1 | 009040 | <u>WARNING</u> – KEEP ALL SHIELDS IN PLACE |
| B1 | 009030 | <u>WARNING</u> – DO NOT EXCEED 1000 RPM ON PTO |
| C1 | 009010 | <u>DANGER</u> – STAY CLEAR OF MACHINE WHEN IN OPERATION |
| D1 | 009020 | <u>DANGER</u> – ROTATING DRIVE LINE |

Note: Manufacturer will replace decals upon request when worn, damaged or missing.

WARNING

1. Keep all shields in place.
2. Disengage PTO and shut off engine before servicing, cleaning, or clearing a clogged machine.
3. Keep hands, feet and clothing away from all moving parts.
4. Allow no riders on this equipment at any time.
5. Learn to operate this machine safely, be alert, observe all safety practices. Machines can be hazardous in the hands of an unfamiliar, untrained or complacent operator. Do not risk injury or death.
6. Allow no one to stand on left side (discharge side) of machine while it is in operation - either when it is moving or standing still.
7. When machine is in operation keep in mind soil, roots, rocks, etc. may be thrown up to 150 feet or more out discharge side, causing damage to any object or harm to any person within it's range.
8. It is recommended that PTO be disengaged when turning at ends of field. Do not make sharp turns while PTO is turning.
9. Be sure to keep slip portion of PTO shaft well lubricated.

**DO NOT EXCEED 1000 RPM ON PTO.
THIS MACHINE RATED AT 100 HP.
DO NOT EXCEED.**



A1

B1



C1

D1

DANGER

STAY CLEAR OF MACHINE WHEN IN OPERATION

DANGER

ROTATING DRIVE LINE

FAILURE TO HEED THESE WARNINGS MAY RESULT IN PERSONAL INJURY OR DEATH.

KEEP CLOTHING, YOURSELF, AND OTHERS WELL CLEAR. DO NOT OPERATE UNLESS PTO GUARDS, TRACTOR MASTER SHIELD, AND IMPLEMENT GUARDS ARE IN PLACE.

PTO GUARDS MUST TURN FREELY AND BE PROPERLY ATTACHED AND MAINTAINED.

"U" JOINT YOKES MUST BE SECURELY LOCKED ONTO TRACTOR AND IMPLEMENT SHAFTS.

BE SURE TRACTOR DRAW BAR AND IMPLEMENT HITCH ARE ADJUSTED CORRECTLY.

GREASE TELESCOPING SHAFT REGULARLY TO MINIMIZE THRUST FORCES.

TRANSPORTATION

If you will be transporting your ditcher on a trailer or in the back of your pickup truck, make sure the machine is safely secured. It may cause injury to yourself or others, or damage the machine if it is not securely tied down. You may wish to place boards under each parking stand and the drag plate to prevent damage to the floor of your pickup or trailer.

UNHITCHING FROM TRACTOR

- 1) Lower parking stands; insert parking stand lock pins to secure.
- 2) Lower ditcher until it is sitting firmly on parking stands and drag plate.



WARNING! Always shut tractor engine off before unhooking PTO.

- 3) Pull the PTO safety slide lock (*See page 11 item L5*) back on the PTO and remove from tractor spline.
- 4) Place PTO in its holder.
- 5) If using a quick hitch, release the quick hitch latches, lower the quick hitch, and slowly pull forward.
- 6) If not using a quick hitch, remove the lynch pins, hitch pins, and spacers, and slowly pull forward.
- 7) Return lynch pins, hitch pins, and spacers to ditcher hitch.

USING THE STORM 3 PT 8-12

Each customer will use their machine for different purposes and in slightly different ways. We cannot tell you the proper way to use your machine for your particular purpose, but we can make recommendations for various uses.

When using the Storm on a 30 HP tractor, it is best to cut 2-3 inches deep and travel approximately 2.50 miles per hour. As you increase horsepower, you'll be capable of cutting slightly deeper and travelling slightly faster, at a maximum of 6 inches deep per pass, and up to 4.50 miles per hour.

CHECKLIST BEFORE OPERATION

- Read and understand the operator's manual.
- Read all information on the safety decals on the machine.
- Check all bolts to make sure they are tight.
- Before connecting to tractor PTO and as general daily maintenance, check for free movement of driveline and/or slack in chain (*See Free Movement of Driveline section on page 8-9*).



WARNING! Do not operate this machine above 540 RPM if ditcher is rated for 540 RPM; above 1000 RPM if ditcher is rated for 1000 RPM. Excessive speed of PTO can be dangerous and could cause personal injury or damage to your tractor or ditcher.

- Be sure the PTO is hooked up correctly and will not interfere with the drawbar on the tractor.
- Be sure the hitch is secure.
- Check your tractor's hydraulic oil reservoir level (*See Lubrication section on page 8*).
- Lubricate machine (*See Lubrication section on page 8*).
- Check PTO forward travel. PTO must slide freely and must not bottom out. Damage to bearings and shaft may occur. Contact your dealer for an optional PTO if bottoming out or separation occurs.
- Before running machine each season or once per year, remove the shear bolts and lock nuts from the PTO shear yoke assembly to verify that the shear yoke is not corroded and will move freely. Reinstall shear bolts and lock nuts after inspection is complete.

OPERATING INSTRUCTIONS

- 1) Keep all shields in place.
- 2) Keep hands, feet and clothing away from all moving parts.
- 3) Do not allow anyone to ride on this equipment at any time.
- 4) Learn to operate this machine safely. Be alert and observe all safety practices. Machines can be hazardous in the hands of an unfamiliar, untrained or complacent operator. Do not risk injury or death!
- 5) Do not allow anyone to stand on the left side (discharge side) of the machine while it is in operation, whether it is moving or standing still.
- 6) Disengage PTO and shut off tractor engine before servicing, cleaning or clearing a clogged machine.
- 7) When the machine is in operation, keep in mind that soil, roots, rocks and other debris may be thrown 50 feet or more out the discharge side causing damage to an object or harm to a person within its range.
- 8) Be sure to keep the slip shaft portion (*See page 11 item L9*) of the PTO shaft well lubricated (*See Lubrication section on page 8*).
- 9) Do not engage PTO when tractor is running at high RPM. Slow RPM to idle before engaging PTO.
- 10) There are two (2) shear bolts in the PTO shaft (*See page 11 item L4*). If these bolts shear, stop the tractor, disengage the PTO, shut off the tractor engine, and replace the sheared bolts.



WARNING! Shear bolts are designed to break under a specified load. Do not use a stronger bolt than is specified by manufacturer!

- 11) If mud or trash prevents soil discharge, stop forward travel and allow the machine to run and clear itself before moving ahead.



WARNING! Do not operate this machine above 540 RPM if ditcher is rated for 540 RPM; above 1000 RPM if ditcher is rated for 1000 RPM. Excessive speed of PTO can be dangerous and could cause personal injury or damage to your tractor or ditcher.



WARNING! Do not exceed recommended horsepower (100 HP or less) for this machine. Excessive horsepower can be dangerous and could cause personal injury or damage to your tractor or ditcher.



WARNING! Do not use this machine with a PTO adaptor. The Agricultural Driveline Manufacturers Association and The Association of Equipment Manufacturers discourage the use of PTO adaptors due to serious safety and operational concerns.

MAINTENANCE

If you are not going to use your machine for a period of time, paint the areas where the soil has worn off the paint particularly the paddles and impeller wheel. Storing your ditcher inside or covering it with a tarp will extend the life of your ditcher.

After approximately every ten (10) hours of use, disconnect the PTO from tractor and check for the free movement of driveline and proper chain tension (*See Free Movement of Driveline section on page 9*).

Replace paddles when rounded or worn flush with the impeller wheel.

If any component of your ditcher appears to be worn and needs replacement, please contact your dealer for replacement parts.

LUBRICATION

The Storm 3-PT 8-12 has seven (7) grease fittings. (*See PTO Shaft on pg. 11 and Parts Lists on pg. 12*) for the location of these fittings. Read carefully the information below on lubricating those areas.

NOTE: Damage may occur due to improper lubrication.

A – DAILY (every 8 hours) – Grease the following with gun grease:

- 1 – The slip joint between PTO halves (remove from tractor, separate halves, apply gun grease to all four sides of shaft, and reassemble).
- 2 – The two (2) universal joints at the ends of each PTO half. Slowly apply grease as to not over grease and blow out seals.

B – 24 HOURS OF OPERATION

- 1 – Check the enclosed gearbox oil level. Fill to the oil level check plug (near the bottom) on right side of gearbox. The factory installed gearbox oil is an ISO 680 industrial gear oil. Use of this oil is recommended as it is specifically formulated for peak performance of your Hurricane Ditcher.

C – 40–60 HOURS OR 1–2 WEEKS OF OPERATION – Grease the following with gun grease:

- 1 – Four (4) flange ball bearings on gearbox – 1 pump each. Slowly apply grease as to not over grease and blow out seals.

D – 100 HOURS OF OPERATION

- 1 – Remove the inspection plate on the top of the gearbox; check for wear on bearings, sprockets, chain, and idler; and adjust the idler assembly as required (*See Idler Adjustment*

section on page 9). Reinstall inspection plate. Note: Make sure to use rubber gasket under inspection plate.

FREE MOVEMENT OF DRIVELINE

When adjusted properly and operating correctly, the driveline should move freely by hand with no slack in the chain.



WARNING! Operation of improperly adjusted machine will cause damage to your ditcher and possibly to your tractor!



WARNING! Do not use your ditcher with a PTO adaptor. The Agricultural Driveline Manufacturers Association and The Association of Equipment Manufacturers discourage the use of PTO adaptors due to serious safety and operational concerns.

To check for free movement of driveline and proper tension on chain:

Step 1 – Grasp the front PTO yoke and quickly rock it back and forth. If the PTO moves before the impeller turns, the chain requires tightening (*See Idler Adjustment section below*).

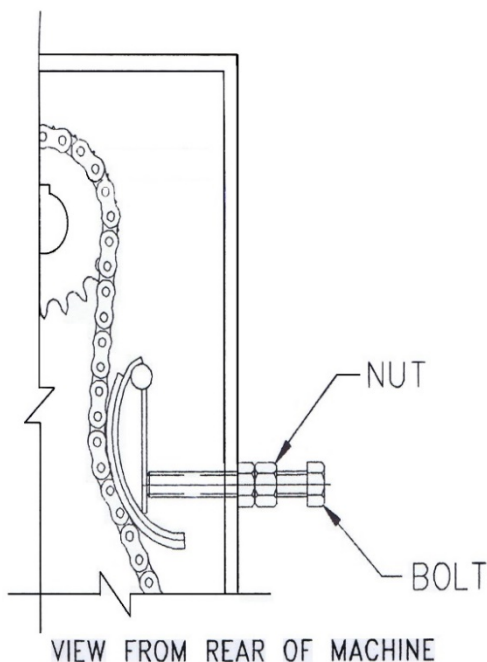
Step 2 – If the impeller is difficult to move, check for debris lodged in the machine. Remove any interfering debris and return to Step 1. If no interferences are found, continue to Step 3.

Step 3 – Remove the inspection plate on top of the gearbox and carefully inspect bearings, sprockets, chain, and idler for damage. If damage is found, repair as needed, reinstall inspection plate and return to Step 1. If no damage is found, continue to Step 4.

Step 4 – Release chain tension until impeller wheel and PTO turn freely (*See Idler Adjustment section below*).

IDLER ADJUSTMENT

Remove the inspection plate on top of the gearbox. Visually inspect the UHMW plastic wear pad for wear or damage. Replace if needed. The idler adjustment assembly has one (1) bolt and one (1) nut (*See illustration below*). The bolt holds the idler assembly against the chain and the nut acts as a jam nut to lock the assembly in position. Reinstall inspection plate using the rubber gasket under the inspection plate. Note: If rubber gasket is cracked or torn order a new one from your dealer.



Chain needs **MORE** tension:

- Loosen Nut
- Tighten Bolt to remove any slack and apply slight tension on chain
- Tighten Nut to secure the assembly

Chain needs **LESS** tension:

- Loosen Nut
- Loosen Bolt until chain is too loose
- Tighten bolt to remove any slack and apply slight tension on chain
- Tighten Nut to secure the assembly

LIMITED WARRANTY

Hurricane Ditcher Company, Inc. shall be considered the "Company" throughout this warranty statement.

The Company warrants each new Company product to be free from defects in material and workmanship. This warranty is applicable only for the normal service life expectancy of the product or components, not to exceed twelve (12) consecutive months from the date of delivery of the new Company product to the end user for personal use. This warranty shall not exceed ninety (90) days from the date of delivery to the end user for commercial use.

Under no circumstances will it cover any merchandise or components thereof, which, in the opinion of the Company, has been subjected to misuse, unauthorized modifications, alterations, an accident, or if repairs have been made with parts other than those obtainable through the Company. The Company in no way warrants tires or other trade accessories since their respective manufacturers warrant these items separately. The Company's obligation under this warranty shall be limited to repairing or replacing free of charge to the original purchaser, any part that, in the Company's judgment, shall show evidence of such defect, provided further that such part shall be returned within thirty (30) days from the date of failure to the Company routed through the dealer and distributor from whom the purchase was made, transportation charges prepaid.

This warranty shall not be interpreted to render the Company liable for injury or damages of any kind or nature to person or property. This warranty does not extend to the loss of crops, loss because of delay in harvesting, or any expense or loss incurred for labor, substitute machinery, rental or for any other reason.

Except as set forth above, the Company shall have no obligation or liability of any kind on the account of any of its equipment and shall not be liable for special or consequential damages. The Company makes no other warranty, expressed or implied, and specifically, the Company disclaims any implied warranty or merchantability or fitness for a particular purpose. Some states or provinces do not permit limitations or exclusions of implied warranties or incidental or consequential damages, so the limitations or exclusions in this warranty may not apply in those areas.

This warranty is subject to any existing conditions of supply, which may directly affect our ability to obtain materials or manufacture replacement parts. The Company reserves the right to make improvements in design or changes in specifications at any time, without incurring any obligation to owners of units previously sold. No one is authorized to alter, modify, or enlarge this warranty. To enhance warranty, replace decals when worn, damaged or missing.

No warranty will be issued for bearing failure resulting from material wrapping around impeller shaft.

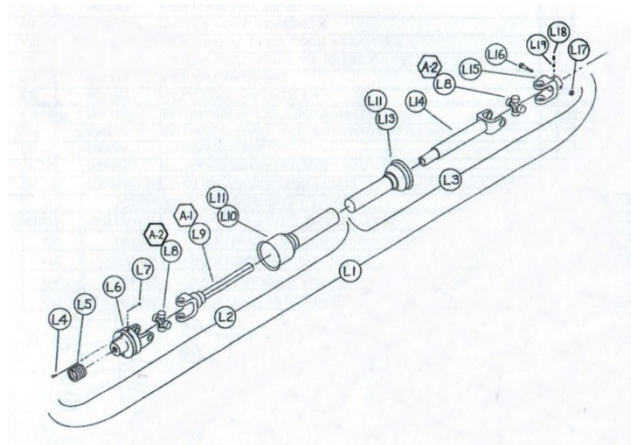
This warranty is not valid unless registered with Company within 30 days from the date of delivery to the end user.

HURRICANE DITCHER COMPANY, INC.
2425 Cathlinette Road
Vincennes, IN 47591
812-886-9663
www.hurricane-ditcher.com
info@hurricane-ditcher.com

PTO SHAFT ASSEMBLY

| ITEM | PART # | DESCRIPTION | QTY. |
|------|----------------|---|------|
| L1 | 000680 | PTO SHAFT COMPLETE (INCLUDES ITEMS L4 THRU L15) | 1 |
| L2 | 000685 | 1 3/8" 21 SPLINE PTO SHAFT FRONT HALF (INCLUDES ITEMS L4 THRU L11) | 1 |
| | 000697 | 1 3/8" 6 SPLINE PTO SHAFT FRONT HALF 540 (INCLUDES ITEMS L4 THRU L11) | |
| L3 | 000700 | PTO SHAFT REAR HALF (INCLUDES ITEMS L8 & L11 THRU L15) | 1 |
| L4 | 001005/ 1005.1 | SHEAR BOLT (HEX HEAD CAP SCREW 3/8-16UNC X 1 GR.8) | 2 |
| L5 | 000725 | 1 3/8" PTO SAFETY LOCK ASSEMBLY | 1 |
| L6 | 000740 | SHEAR YOKE ASSEMBLY 1 3/8 21 SPLINE | 1 |
| | 000745 | SHEAR YOKE ASSEMBLY 1 3/8" 6 SPLINE | |
| L7 | 001255 | HEX LOCK NUT 3/8-16UNC | 2 |
| L8 | 001890 | UNIVERSAL JOINT 1 3/4 55 SERIES | 2 |
| L9 | 000820 | YOKE AND SHAFT | 1 |
| L10 | 000770 | PTO GUARD (FRONT HALF) | 1 |
| L11 | 000715 | RETAINER & NYLON KIT (NOT SHOWN) | 2 |
| L13 | 000775 | PTO GUARD (REAR HALF) | 1 |
| L14 | 000785 | YOKE, TUBE, AND SLIP SLEEVE | 1 |
| L17 | 001320 | HEX LOCK NUT 3/8-16UNC | 1 |
| L15 | 001255 | YOKE 1 3/4 KEYED | 1 |
| L16 | 000815 | HEX HEAD CAP SCREW 3/8-16UNC X 3 1/2 GRADE 8 | 1 |
| L18 | 002811 | SET SCREW 3/8 X 3/8 | 1 |
| L19 | 002812 | SET SCREW 3/8 x 1/4 | 1 |

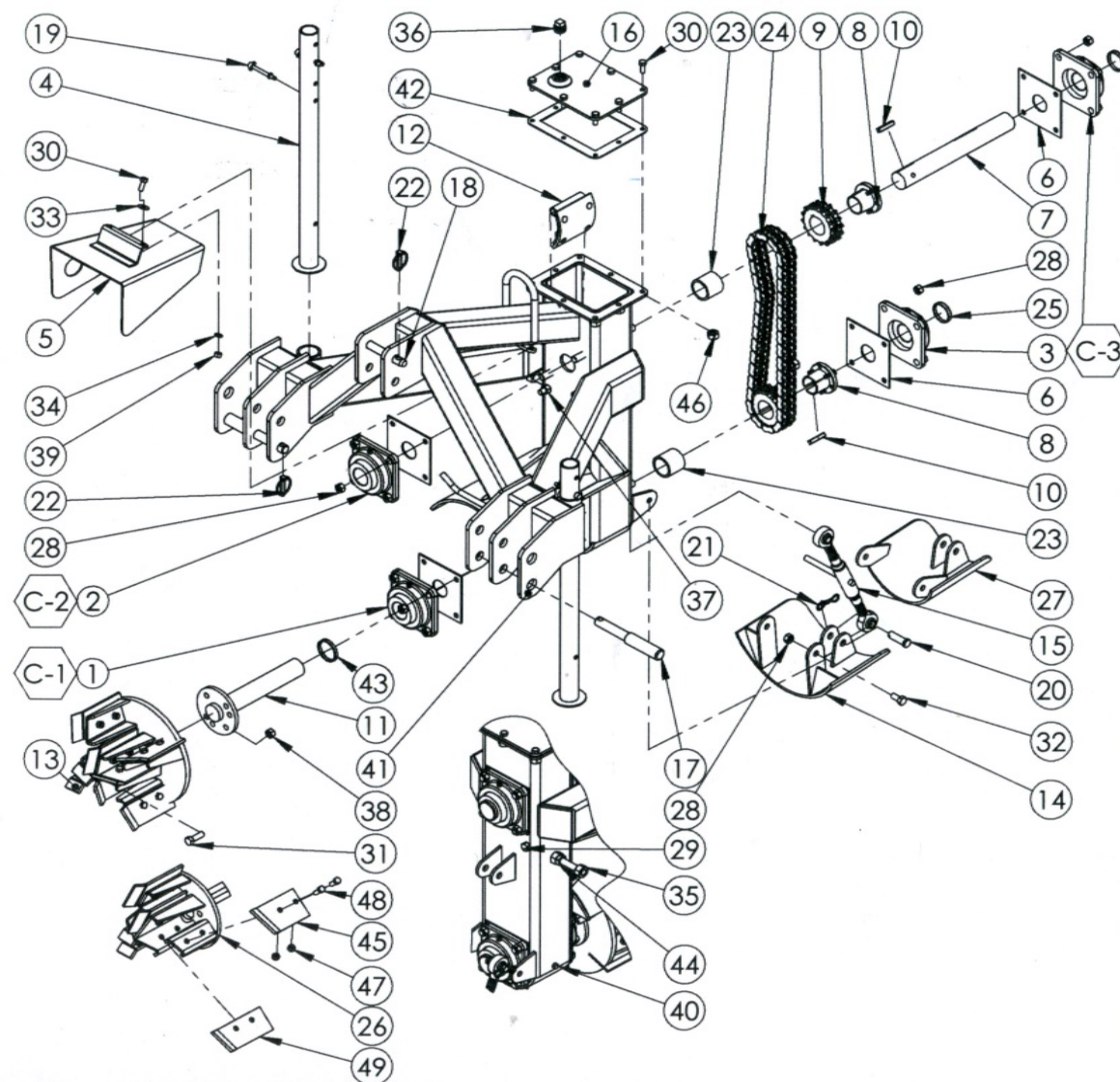
PTO SHAFT ASSEMBLY DIAGRAM



- INDICATES A PARTS LIST ITEM NUMBER
- ⬡ LUBRICATIONS REQUIRED- SEE LUBRICATION, PAGE 8

(X) INDICATES A PARTS LIST ITEM NUMBER

(X) LUBRICATION REQUIRED - SEE LUBRATION, PAGE 8



| ITEM NO. | PART NUMBER | DESCRIPTION | QTY. |
|----------|-------------|-----------------------------------|-------|
| 1 | 00113P | BEARING UNCAPPED | 1 |
| 2 | 00113P | BEARING UNCAPPED | 1 |
| 3 | 00114P | 1-3/4" FLANGE BEARING CAPPED | 2 |
| 4 | 005306 | STORM PARKING STAND | 2 |
| 5 | 005329.3 | STORM PTO COVER ASSEMBLY | 1 |
| 6 | 005335 | STORM BEARING SEAL/GASKET | 4 |
| 7 | 005319 | STORM TOP SHAFT | 1 |
| 8 | 005334 | 1-3/4" SPLIT TAPERED BUSHING | 2 |
| 9 | 000297 | SPROCKET | 2 |
| 10 | 003111 | 3/8 X 1-7/8 KEY | 3 |
| 11 | 005320 | STORM BOTTOM SHAFT ASSEMBLY | 1 |
| 12 | 005328 | STORM IDLER ASSEMBLY | 1 |
| 13 | 005332 | STORM 12" IMPELLER WHEEL ASSEMBLY | 1 |
| 14 | 005318 | STORM 12" DRAG PLATE ASSEMBLY | 1 |
| 15 | 005321 | TURNBUCKLE | 1 |
| 16 | 005310.1 | STORM LID ASSEMBLY | 1 |
| 17 | 005322 | 3PT BTM PIN | 2 |
| 18 | 005338 | 3PT TOP PIN | 1 |
| 19 | 001975 | PTO CLIP | 4 |
| 20 | 005337 | CLEVIS PIN | 2 |
| 21 | 002135 | BOWTIE COTTER PIN | 2 |
| 22 | 001926 | LYNCH PIN/CLIP | 3 |
| 23 | 005342 | 1-3/4" SHAFT SPACER | 2 |
| 24 | 000531 | B60 CHAIN (4 FT) | 1 |
| 25 | 000114P.1 | 1-3/4" FLANGE BEARING CAP | 2 |
| 26 | 005330 | STORM 8" IMPELLER ASSEMBLY | 1 |
| 27 | 005317 | STORM 8" DRAG PLATE ASSEMBLY | 1 |
| 28 | 001280 | 1/2-20 HEX NUT DISTORTED THREAD | 18 |
| 29 | 001350 | 1/2-20 X 1 HEX BOLT | 1 |
| 30 | 001005 | 3/8-16 X 1.00 HEX BOLT | 10 |
| 31 | 001185 | 3/8 FLAT WASHER | 4 |
| 32 | 001170 | 3/8 LOCK WASHER | 2 |
| 33 | 001120 | 3/8-16 HEX NUT | 2 |
| 34 | 001055 | 3/8" LOCKWASHER | 2 |
| 35 | 005328.5 | IDLER ADJ STUD- WELDMENT | 1 |
| 36 | 000885.1 | 3/4 NPT SQUARE PLUG VENTED | 1 |
| 37 | 001360 | 1/2-20 X 1-1/2 CAPSCREW | 1 |
| 38 | 001280 | 1/2-20 LOCK NUT | 1 |
| 39 | 001265 | 1/2-13 HEX NUT | 1 |
| 40 | 000870 | 1/4 NPT SQUARE PLUG | 1 |
| 41 | 005399 | STORM FRAME WELDMENT | 1 |
| 42 | 005336 | STORM GEARBOX LID GASKET/SEAL | 1 |
| 43 | 005341 | SPACER 2-1/4" OD X 1/4" | 1 |
| 44 | 001130 | 5/8-11 USS HEX NUT | 1 |
| 45 | 005327 | STORM 8" 1/2" OUTER PADDLE | 3/4 |
| 46 | 001255 | 3/8-16 DISTORTED THREAD NUT | 8 |
| 47 | 001255 | 3/8-16 HEX NUT DISTORTED THREAD | 12/16 |
| 48 | 001005 | 3/8-16 X 1.00 HEX | 12/16 |
| 49 | 005326 | STORM 8" 1/2" INNER PADDLE | 3/4 |

MAINTENANCE LOG

| DATE | SERVICE PERFORMED | SERVICE TECHNICIAN |
|------|-------------------|--------------------|
| | | |
| | | |
| | | |
| | | |
| | | |
| | | |
| | | |
| | | |
| | | |
| | | |
| | | |
| | | |
| | | |
| | | |
| | | |
| | | |
| | | |
| | | |

NOTES

| | |
|--|--|
| | |
| | |
| | |
| | |
| | |
| | |
| | |
| | |
| | |
| | |
| | |
| | |

INFORMATION

| | |
|------------------------|--|
| DEALER NAME | |
| DEALER ADDRESS | |
| DEALER TELEPHONE # | |
| SALESPERSON | |
| DATE DITCHER PURCHASED | |
| DITCHER MODEL # | |
| DITCHER SERIAL # | |



THE STORM

3-PT 8-12

DITCHER



HURRICANE DITCHER CO., INC.

2425 Cathlinette Rd.
Vincennes, IN 47591

812-886-9663 Fax 812-886-0530

www.hurricane-ditcher.com
e-mail: info@hurricane-ditcher.com

